

5+/- acres in Fannin County, Georgia

North Georgia Mountains

Perfect location for a secluded homestead! 10 minutes to downtown Blue Ridge and 5 minutes to Curtis Switch Put in takeout. This town has incredible outdoor activities, Gourmet food and wonderful Wineries and Craft Beer.

Where else can one have the convenience of all the big city amenities (Atlanta) just to the south, and more importantly, have 2,370,000 acres of National Forest and Park land within easy driving distance?

The north Georgia mountains are strategically located in and around 700,000 acres of pristine Chattahoochee National Forest land. Nearby you have the Cherokee National Forest (640,000 acres), Great Smoky Mountains National Park (500,000 acres) and the Nantahala National Forest (530,000 acres) in Tennessee and North Carolina.

This is enough playground for more than a lifetime of exploration!

Trout Fishermen - Take Notice!

5 Acres - Fannin County, Georgia

Beautiful building sites, massive hardwoods, minutes to the lower Toccoa River (premier trout stream)!

General Description

Great building sites.

Massive hardwoods over the entire property.

5 minutes to the only public access (that I know about) on the lower Toccoa River between Blue Ridge dam and McCaysville.

Seasonal Toccoa River views.



JUSTIN CHAMBERS

justin@selandgroup.com | 1-866-751-LAND | (706) 728-0612



No covenants, restrictions, or homeowners fees.

Perk test complete.

Very limited development in this "subdivision" - call me for details.

Close to the Cohutta's and thousands of acres of National Forest lands.

Great strategic location - in the lower Toccoa River Valley close to GA / TN / NC borders. Also, Atlanta to the south, 2.3M acres of Federal and State managed lands nearby. Close to the quaint town of Blue Ridge and Blue Ridge Lake

Access: Private road.

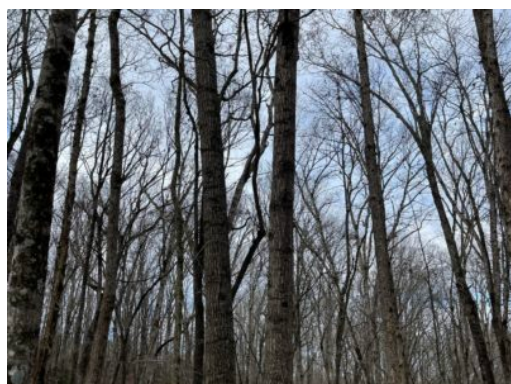
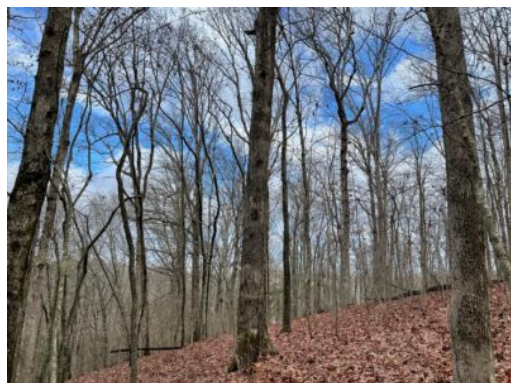
Acreage with Homesite · \$109,900
View online at <http://selg.biz/0933>



JUSTIN CHAMBERS

justin@selandgroup.com | 1-866-751-LAND | (706) 728-0612





JUSTIN CHAMBERS

justin@selandgroup.com | 1-866-751-LAND | (706) 728-0612

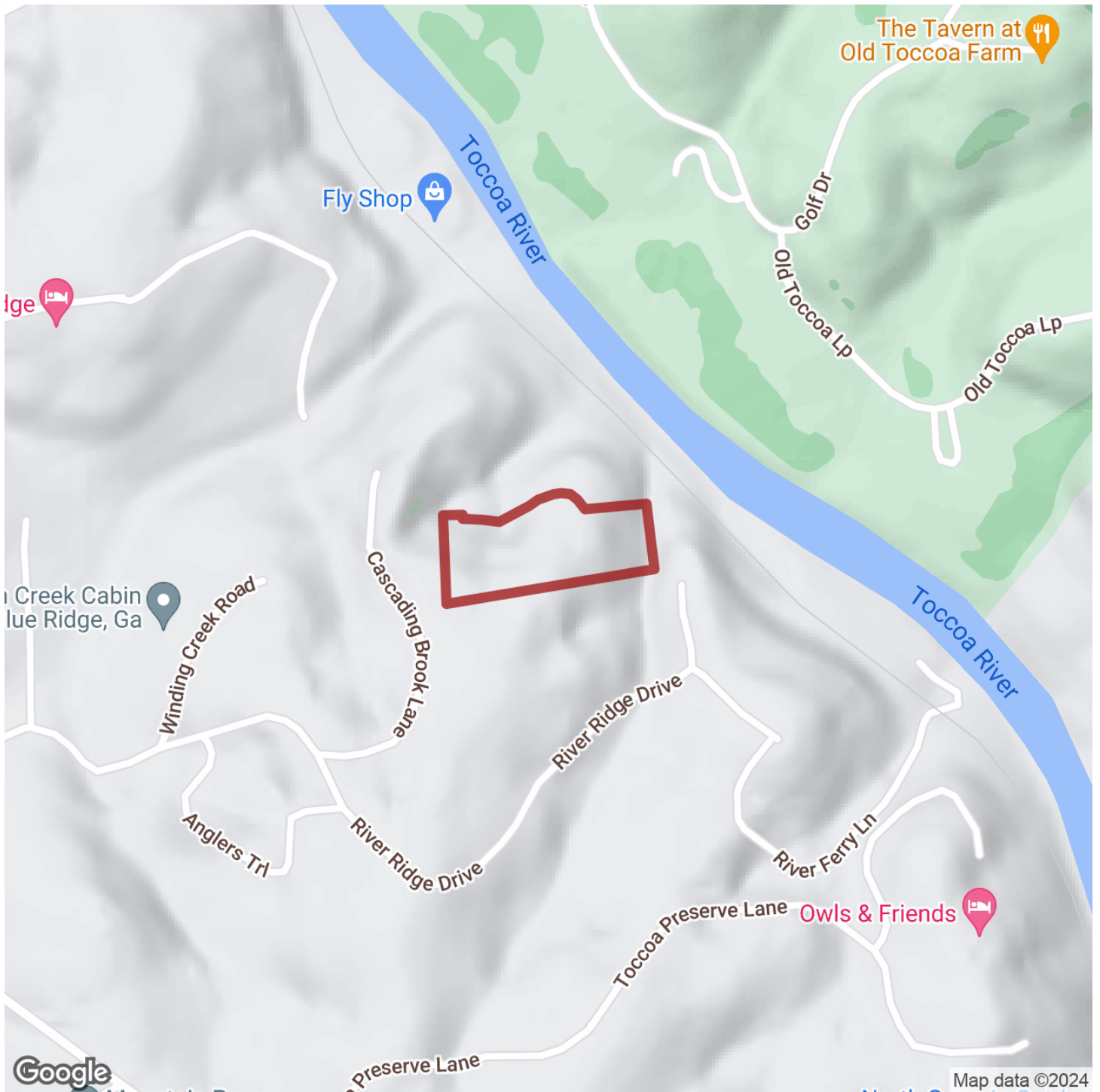




JUSTIN CHAMBERS

justin@selandgroup.com | 1-866-751-LAND | (706) 728-0612

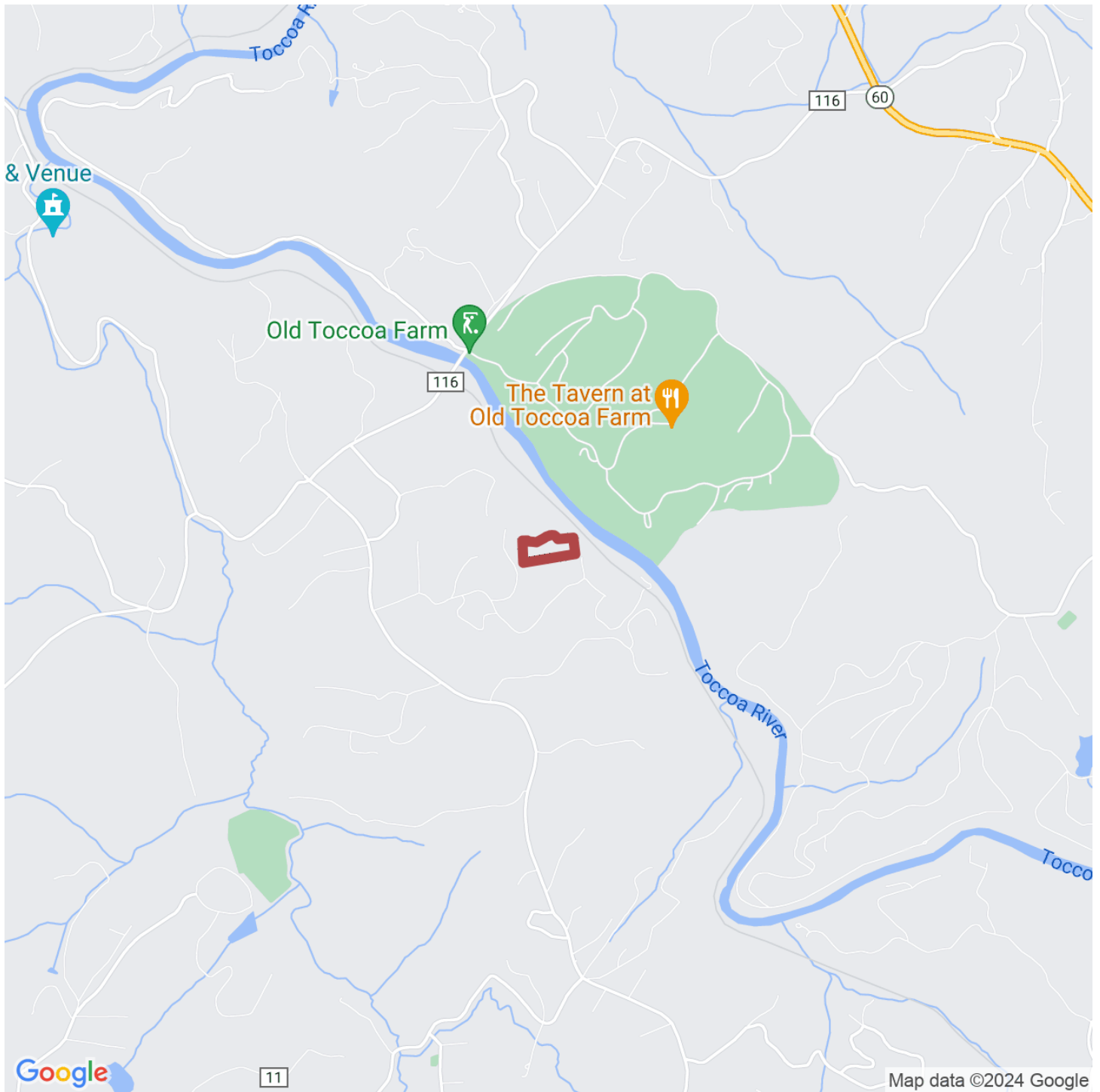




JUSTIN CHAMBERS

justin@selandgroup.com | 1-866-751-LAND | (706) 728-0612





JUSTIN CHAMBERS

justin@selandgroup.com | 1-866-751-LAND | (706) 728-0612

